

Transformative Nature (Conversations)

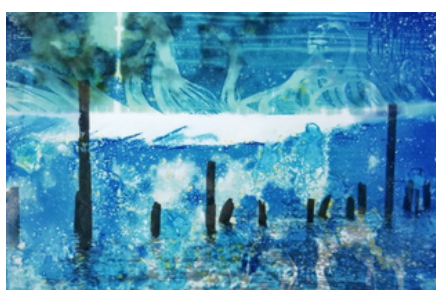
Holly Sandiford, Kaitlin Ferguson, Rachel Wright,
Jacques Nimki, Genevieve Rudd
17 February - 16 March 2024

Private View: 16 February, 6 - 8pm, Closing Event: 16 March, 2 - 4pm
Upper & Lower Galleries, The Corn Hall

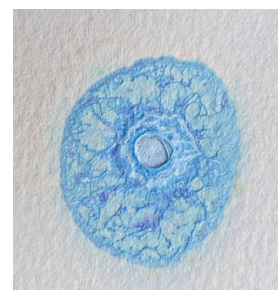
Humankind's footprint has triggered the next geological era for our planet, known as the 'Anthropocene'. Our activity has had an enormous impact, fundamentally altering the planet's climate, geology and ecosystems. This is an exhibition and conversation between three artists whose work centres around arts, ecology and science.

Kaitlin Ferguson's work examines the environmental and geological considerations of the Anthropocene, as well as the potential of new technologies to enable greater connection with nature. Her practice spans several different forms: including printmaking, public sculpture commissions, developing research, and working with communities. Her recent research, supported by Arts Council England, focuses on developing her own sustainable materials, or 'biomaterials' to work with. By using waste products, such as coffee grounds and repurposing them for use in 3D printing, she makes work that draws attention to the overconsumption of our planet's natural resources.

Holly Sandiford's practice involves engaging physically in nature, observing and recording it through fieldwork. This includes analogue and cameraless photography, field recordings, and video. She is fascinated by the vastness of outer space and how this connects to the vastness of our soil which teems with microscopic life. She uses the chemical makeup of soils, mud, flowers and foliage to interact with the chemicals in expired photographic paper, 16mm and 35mm film. Her unexpected, otherworldly and cosmic images are thus concreted with the natural world.



**CORN
THE HALL**



Transformative Nature (Conversations)

Holly Sandiford, Kaitlin Ferguson, Rachel Wright,
Jacques Nimki, Genevieve Rudd

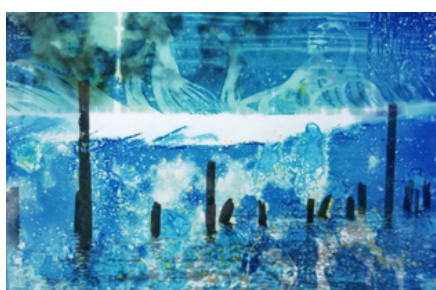
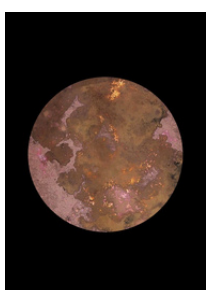
17 February - 16 March 2024

Private View: 16 February, 6 - 8pm, Closing Event: 16 March, 2 - 4pm
Upper & Lower Galleries, The Corn Hall

Rachel Wright is primarily working with photography, video and live projection. Her work seeks to challenge habitual ways of seeing the world - from the personal and individual to the societal and ecological. As an artist she is drawn to complexity, creating multi-layered imagery which seeks to transcend polarisation and presumed binaries. Rachel is particularly interested in the potential of the arts in deconstructing notions of nature/culture dualism, and opening up the possibility of seeing the inherently interconnected nature of the world.

Jacques Nimki explores urban landscapes, using weeds and flowers to challenge perceptions of the overlooked. His art navigates the interplay between nature and culture, visible and hidden. Processes include observational and digital work, cultivation, culinary and medicinal exploration. Nimki's projects are informed by local context, historical influences, and hands-on engagement with surroundings. His diverse outcomes span from paintings to meadows installed inside buildings, plant propagation, drawing installations, and interventions in interior and architectural spaces.

Genevieve Rudd is an experienced Community Artist. She develops creative projects that encourage closer looking, and that ask about the places and people around us. These include environmental arts, working outdoors, walking and nurturing nature-connection through creativity. She's interested in exploring disrupted rhythms at this time of Earth Crisis. She is also considering boundaries and tipping points of herself, as a community artist working in her home-town, as what it means to work in a 'giving' role.



**CORN
THE HALL**

